






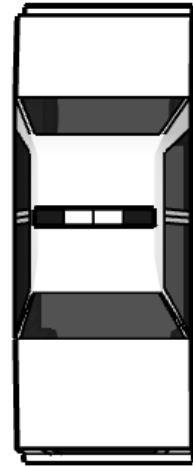


<div data-bbox="141 264 439 692" data-label="Image"> </div> <div data-bbox="206 264 358 319" data-label="Caption"> <p>Janet</p> </div> <div data-bbox="44 75 521 234" data-label="Text"> <p>Janet is a trained solicitor. She has been concerned about how the police have been increasingly violent.</p> </div>	<div data-bbox="680 347 996 686" data-label="Image"> </div> <div data-bbox="786 272 891 319" data-label="Caption"> <p>Ron</p> </div> <div data-bbox="602 75 1075 234" data-label="Text"> <p>Ron has worked as a radiotherapy nurse for 15 years. The recent food shortages have made it harder to feed his family.</p> </div>	<div data-bbox="1252 347 1556 692" data-label="Image"> </div> <div data-bbox="1355 264 1449 319" data-label="Caption"> <p>Jay</p> </div> <div data-bbox="1164 75 1637 234" data-label="Text"> <p>Jay has just left school. They'd like to be a photographer but they have to work at the local MoonBux to help support their mum.</p> </div>	<div data-bbox="1778 347 2136 683" data-label="Image"> </div> <div data-bbox="1890 272 2024 319" data-label="Caption"> <p>Leah</p> </div> <div data-bbox="1722 75 2192 234" data-label="Text"> <p>Leah is scared about the state of the world. They use Constagram as a way to connect with people like them.</p> </div>
<div data-bbox="22 866 141 912" data-label="Section-Header"> <h3>Janet</h3> </div> <div data-bbox="22 932 521 1007" data-label="Text"> <p>Janet provides additional strengths when joining forces with...</p> </div> <div data-bbox="22 1018 194 1082" data-label="Text"> <p>Leah </p> </div> <div data-bbox="22 1083 530 1294" data-label="Text"> <p>Increased Awareness of Protestor Rights on Social Media When passing a police car, players can choose between the top two police cards.</p> </div> <div data-bbox="22 1295 224 1351" data-label="Text"> <p>Stuart </p> </div> <div data-bbox="22 1353 508 1520" data-label="Text"> <p>Worker Strikes When passing a community building, players can choose between the top two community cards.</p> </div>	<div data-bbox="580 866 665 912" data-label="Section-Header"> <h3>Ron</h3> </div> <div data-bbox="580 932 1061 1007" data-label="Text"> <p>Ron provides additional strengths when joining forces with...</p> </div> <div data-bbox="580 1018 784 1082" data-label="Text"> <p>Abeela </p> </div> <div data-bbox="580 1083 1072 1165" data-label="Text"> <p>First Aid Training All players take half damage.</p> </div>	<div data-bbox="1135 866 1209 912" data-label="Section-Header"> <h3>Jay</h3> </div> <div data-bbox="1135 932 1608 1007" data-label="Text"> <p>Jay provides additional strengths when joining forces with...</p> </div> <div data-bbox="1135 1018 1352 1082" data-label="Text"> <p>Abeela </p> </div> <div data-bbox="1135 1083 1619 1173" data-label="Text"> <p>Photographs for Media Scandal Take another 2 influence points.</p> </div> <div data-bbox="1135 1174 1321 1230" data-label="Text"> <p>Leah </p> </div> <div data-bbox="1135 1232 1561 1329" data-label="Text"> <p>Youth Stikes Take another 3 influence points.</p> </div>	<div data-bbox="1706 866 1814 912" data-label="Section-Header"> <h3>Leah</h3> </div> <div data-bbox="1706 932 2192 1007" data-label="Text"> <p>Leah provides additional strengths when joining forces with...</p> </div> <div data-bbox="1706 1018 1870 1082" data-label="Text"> <p>Janet </p> </div> <div data-bbox="1706 1083 2210 1294" data-label="Text"> <p>Increased Awareness of Protestor Rights on Social Media When passing police car, players can choose between the top two police cards.</p> </div> <div data-bbox="1706 1295 1859 1361" data-label="Text"> <p>Jay </p> </div> <div data-bbox="1706 1362 2119 1444" data-label="Text"> <p>Youth Stikes Take another 3 influence points.</p> </div>

<div data-bbox="141 308 380 715" data-label="Image"> </div> <div data-bbox="188 308 376 357" data-label="Caption"> <p>Abeela</p> </div> <div data-bbox="47 68 521 271" data-label="Text"> <p>Abeela works for a newspaper. She loves writing practical lifestyle guides for her readers but recently she's had to report on the constant droughts.</p> </div>	<div data-bbox="692 308 981 730" data-label="Image"> </div> <div data-bbox="752 308 927 357" data-label="Caption"> <p>Stuart</p> </div> <div data-bbox="604 68 1072 271" data-label="Text"> <p>Stuart works for a farm and used to run the local union. His salary has been cut as the recent weather has made it harder for his employer to make a profit.</p> </div>		<div data-bbox="1523 36 2235 754" data-label="Image"> </div>
<div data-bbox="22 874 172 914" data-label="Section-Header"> <h3>Abeela</h3> </div> <div data-bbox="22 940 537 1016" data-label="Text"> <p>Abeela provides additional strengths when joining forces with...</p> </div> <div data-bbox="22 1026 232 1086" data-label="Text"> <p>Jay </p> </div> <div data-bbox="22 1099 515 1177" data-label="Text"> <p>Platform for Media Scandal Take another 2 influence points.</p> </div> <div data-bbox="22 1195 176 1262" data-label="Text"> <p>Ron </p> </div> <div data-bbox="22 1265 515 1343" data-label="Text"> <p>First Aid Training All players take half damage.</p> </div>	<div data-bbox="584 874 723 914" data-label="Section-Header"> <h3>Stuart</h3> </div> <div data-bbox="584 940 1097 1016" data-label="Text"> <p>Stuart provides additional strengths when joining forces with...</p> </div> <div data-bbox="584 1026 781 1086" data-label="Text"> <p>Janet </p> </div> <div data-bbox="584 1099 1068 1268" data-label="Text"> <p>Worker Strikes When passing a community building, players can choose between the top two community cards.</p> </div>		



The police stop and ask you
some questions...



**Driven Home: return to
home square**



**Driven Home: return
to home square**



**Items Confiscated:
- 1 Influence**



+ - 2 Health

The police look at you
suspiciously...



**Driven Home: return to
home square**



**Arrested: move to
furthest away
community building**



**Items Confiscated:
- 2 Influence**



+ - 3 Health

The police are distracted...



Pass by



Pass by



**Driven Home: return
to home square**



**Items
Confiscated:
- 1 Influence**

Some police are sitting on the
bonnet waiting for you...



**Items Confiscated:
- 2 Influence**



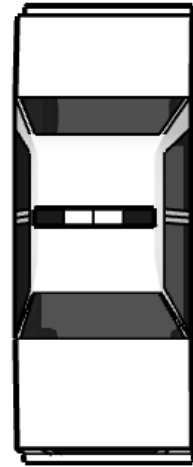
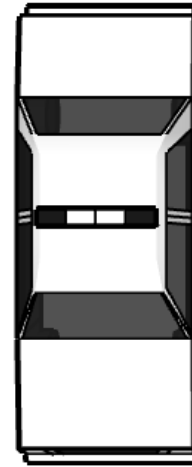
**Arrested: move to
furthest away
community building**



- 2 Health



+ - 3 Health



The police stop and ask you some questions...



Driven Home: return to home square



Driven Home: return to home square



Items Confiscated: - 1 Influence



+ - 2 Health

The police look at you suspiciously...



Driven Home: return to home square



Arrested: move to furthest away community building



Items Confiscated: - 2 Influence



+ - 3 Health

The police are distracted...



Pass by



Pass by



Driven Home: return to home square



Items Confiscated: - 1 Influence

Some police are sitting on the bonnet waiting for you...



Items Confiscated: - 2 Influence



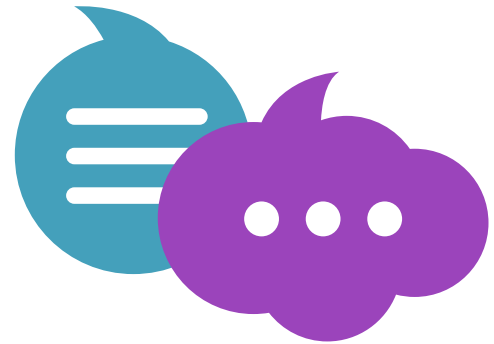
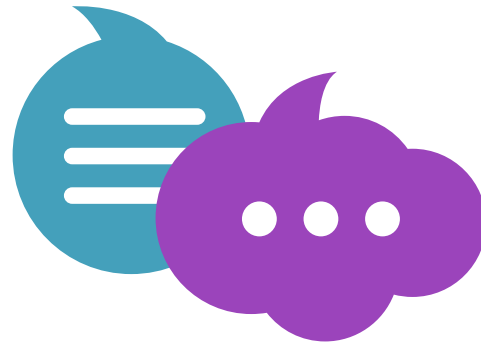
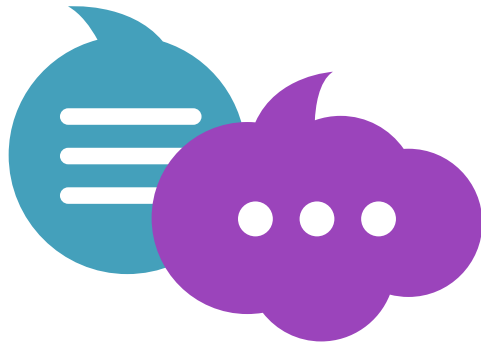
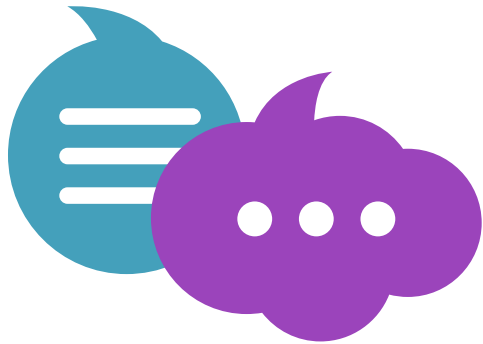
Arrested: move to furthest away community building



- 2 Health



+ - 3 Health



Shutdown Coffee Shop

The windows are boarded up, but you find some old coffee and there's a table where you can organise.

Players can choose to double their rolls for one round.

Hold onto this card until the action described has been taken.

Old Library Building

You used to come here as a kid before the funding got cut. You sneak a look at the city map.

Players can look at the top three tiles on the tile draw pile.

Underground Art Studio

You convince some creatives to design some visual pieces for your protest.

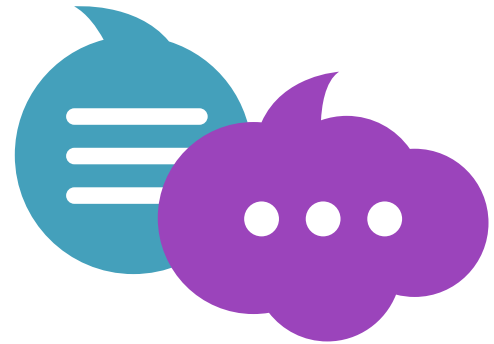
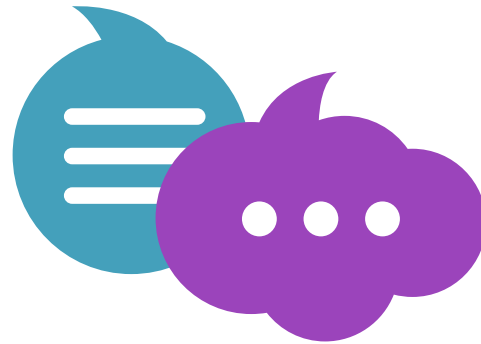
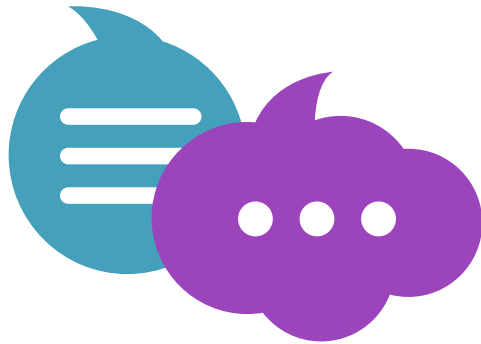
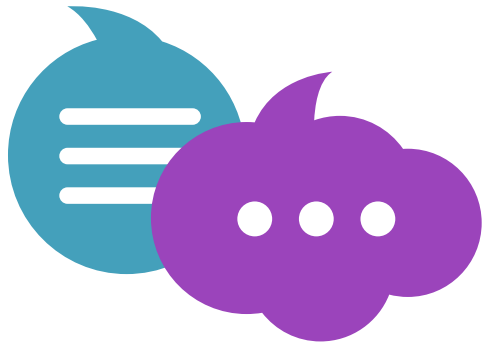
Collect 2 influence tokens.

A Beam of Sunlight

The gods of fate smile kindly at you.

Players can choose one opportunity to re-roll.

Hold onto this card until the action described has been taken.



Neighbour's Basement

You convince your neighbour to print some flyers for you.

You can recruit one other player to the movement in the street.

Hold onto this card until the action described has been taken.

Council Building

You warn your local council about potential threats and they take precautionary action.

Players can prevent one disaster from happening.

Hold onto this card until the action described has been taken.

Private Clinic

You explain that you can't afford any medical fees but a nurse decides to help you out for free.

Players on this tile restore their health to 4 points.

Car Park

You get a lift from an awesome member of the social movement.

Players on this tile can choose to move to any other open community building.

